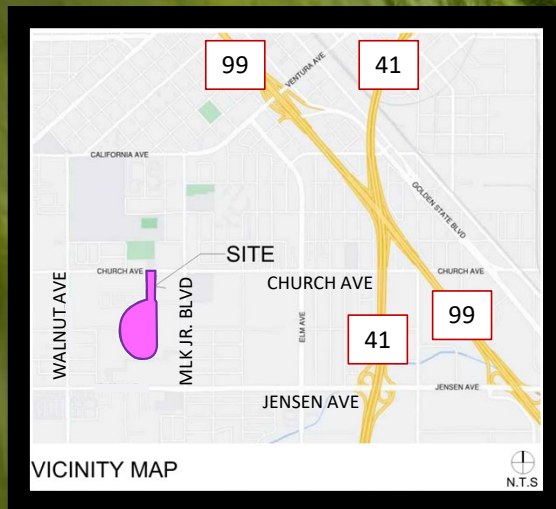


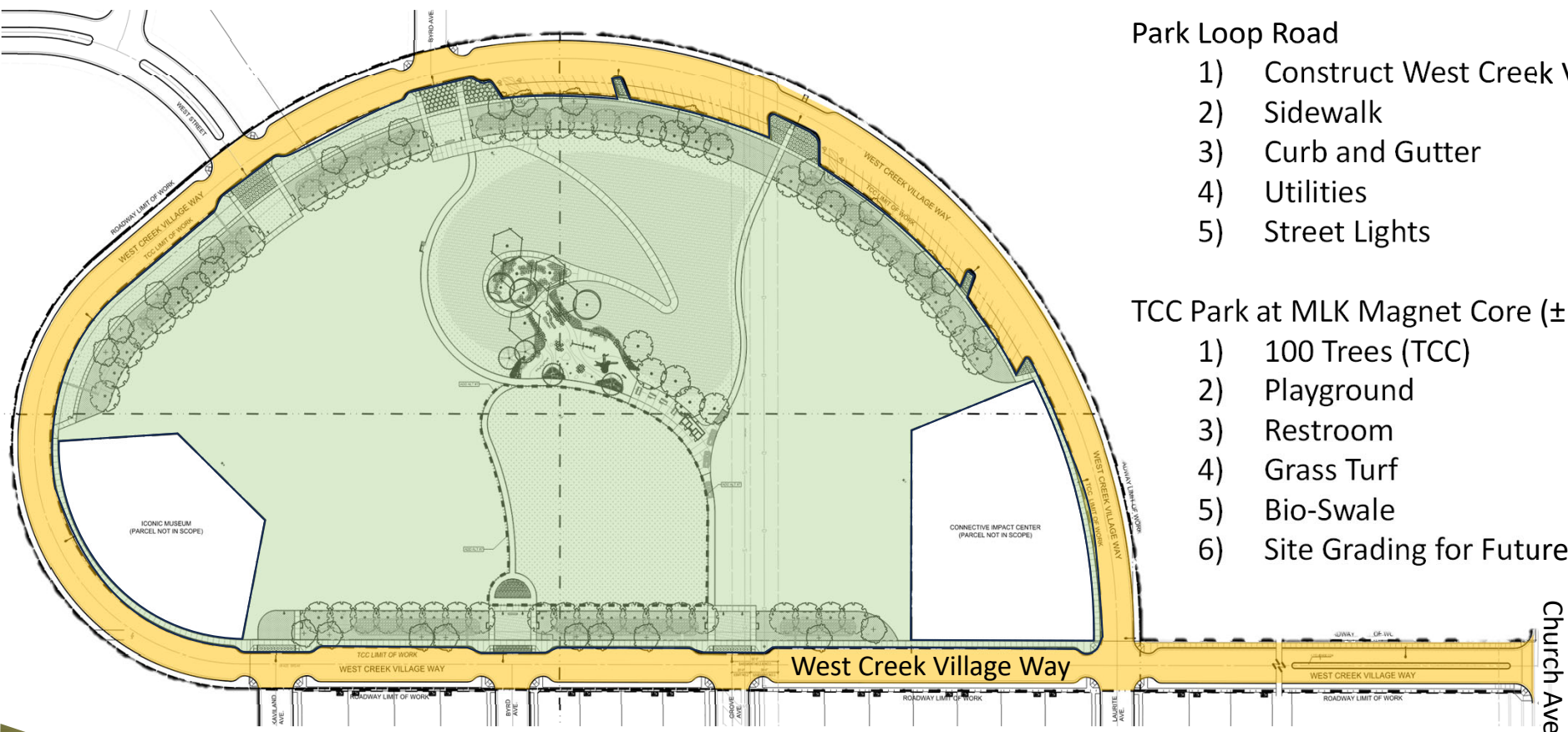
#13 Park at MLK Magnet Core



PROJECT SITE ADDRESS:
2520 S. West Creek Village Way
Fresno, CA 93706

APN: 479-060-18T





Park Loop Road

- 1) Construct West Creek Village Way
- 2) Sidewalk
- 3) Curb and Gutter
- 4) Utilities
- 5) Street Lights

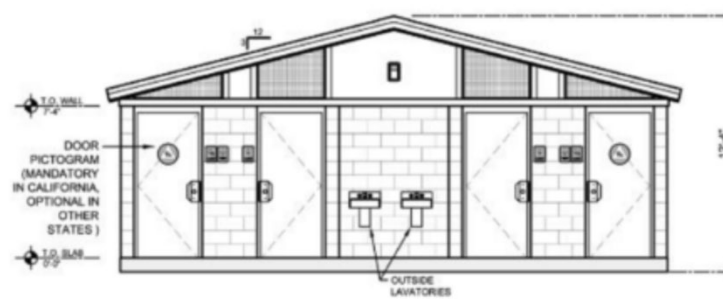
TCC Park at MLK Magnet Core (±10 acres)

- 1) 100 Trees (TCC)
- 2) Playground
- 3) Restroom
- 4) Grass Turf
- 5) Bio-Swale
- 6) Site Grading for Future

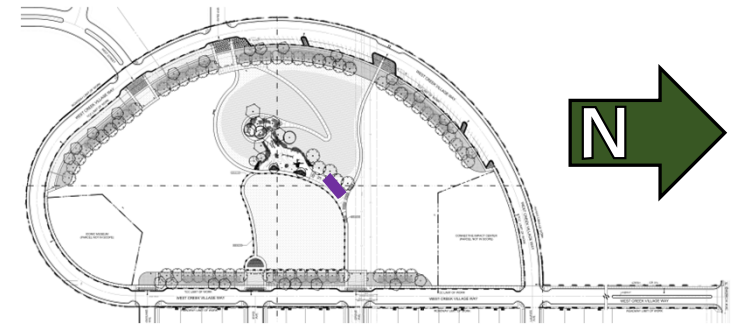
SCOPE OF WORK FOR PARK PROJECT



STAINLESS STEEL
WITH MOTION SENSOR



ELEVATION

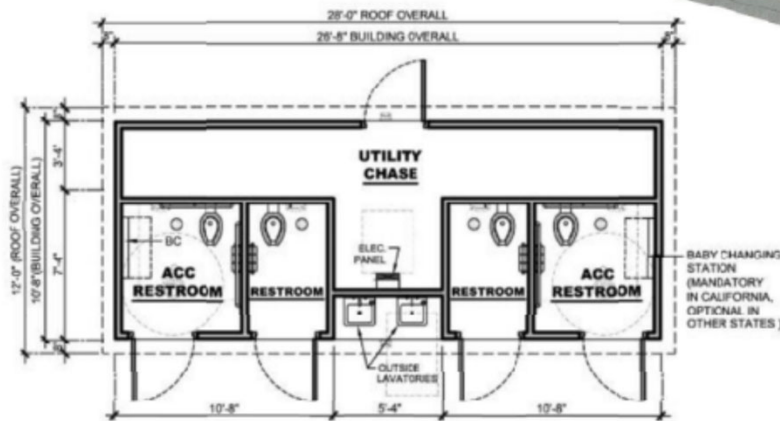


LOCATION MAP

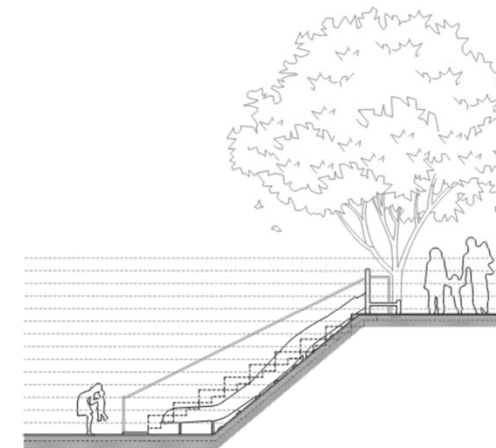
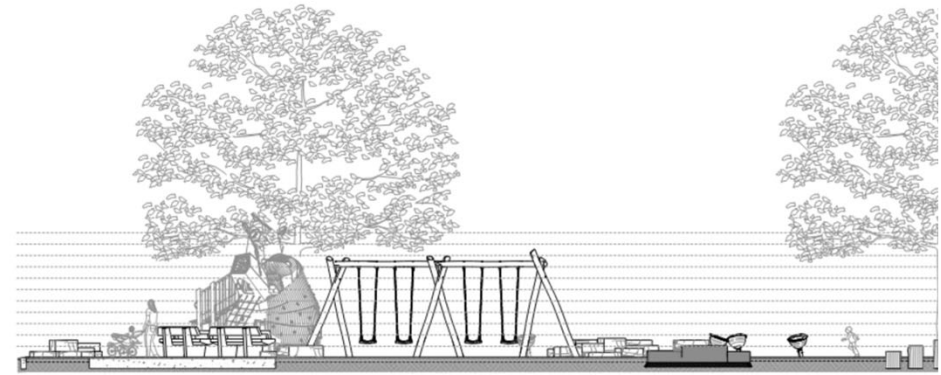
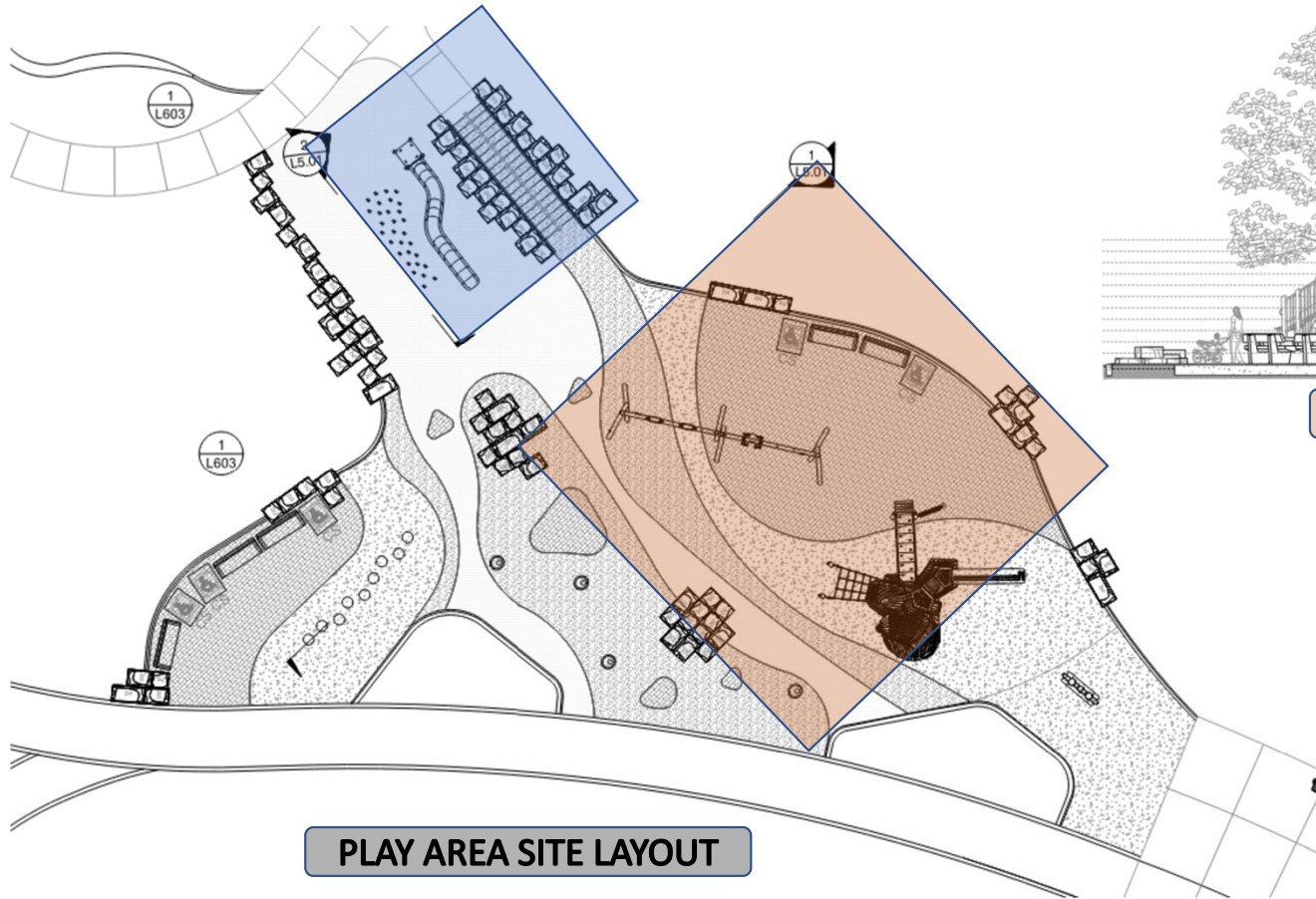


PERSPECTIVE

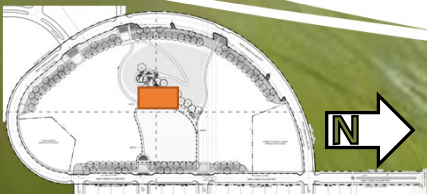
IN-WALL HAND DRYER

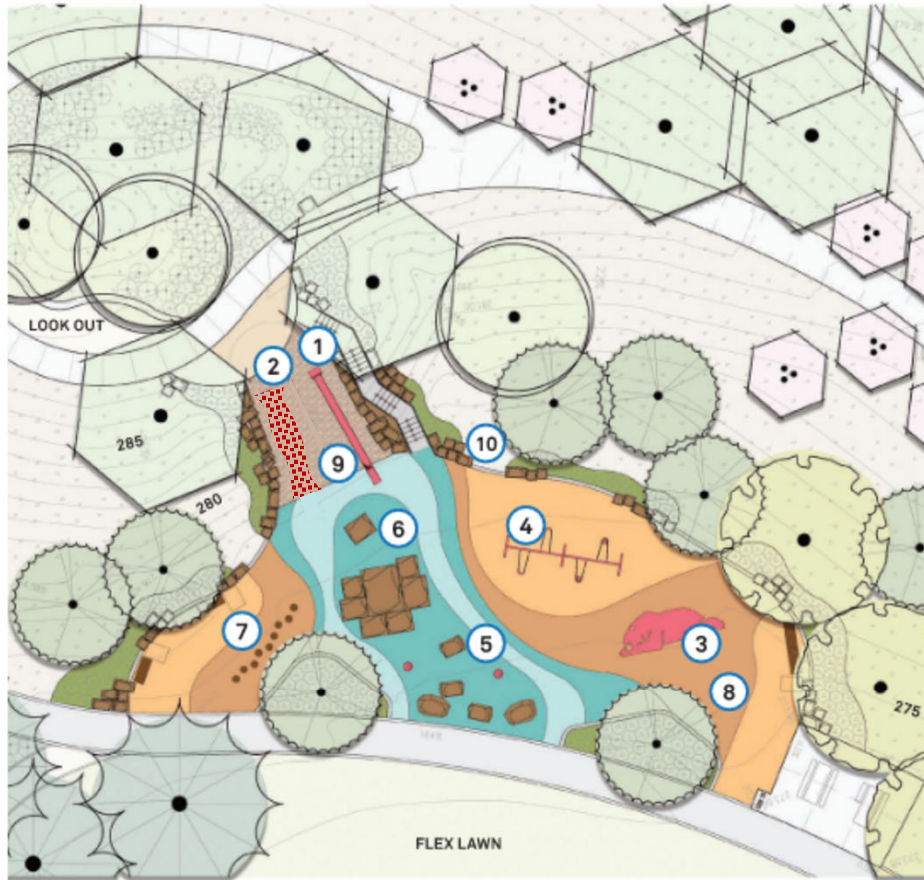


DSA CERTIFIED PREFABRICATED RESTROOM



PLAY AREA AND FEATURES





1 EMBANKMENT SLIDE 2-12



2 CLIMBING EMBANKMENT 5-12



3 CA BEAR PLAY SCULPTURE 2-12



4 SWINGS 2-12



5 SPINNING BOWL 2-12



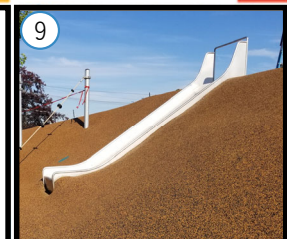
6 BOULDER PLAY 5-12



7 WOOD STUMPS 2-12



8 INCLUSIVE SURFACING



9 TEXTURAL SURFACING

PLAYGROUND EQUIPMENT AGE RANGE

- 2-5 2-5 AGE RANGE
- 2-12 2-5 & 5-12 AGE RANGE
- 5-12 5-12 AGE RANGE

PLAY AREA AND FEATURES

PROJECTED TIMELINE



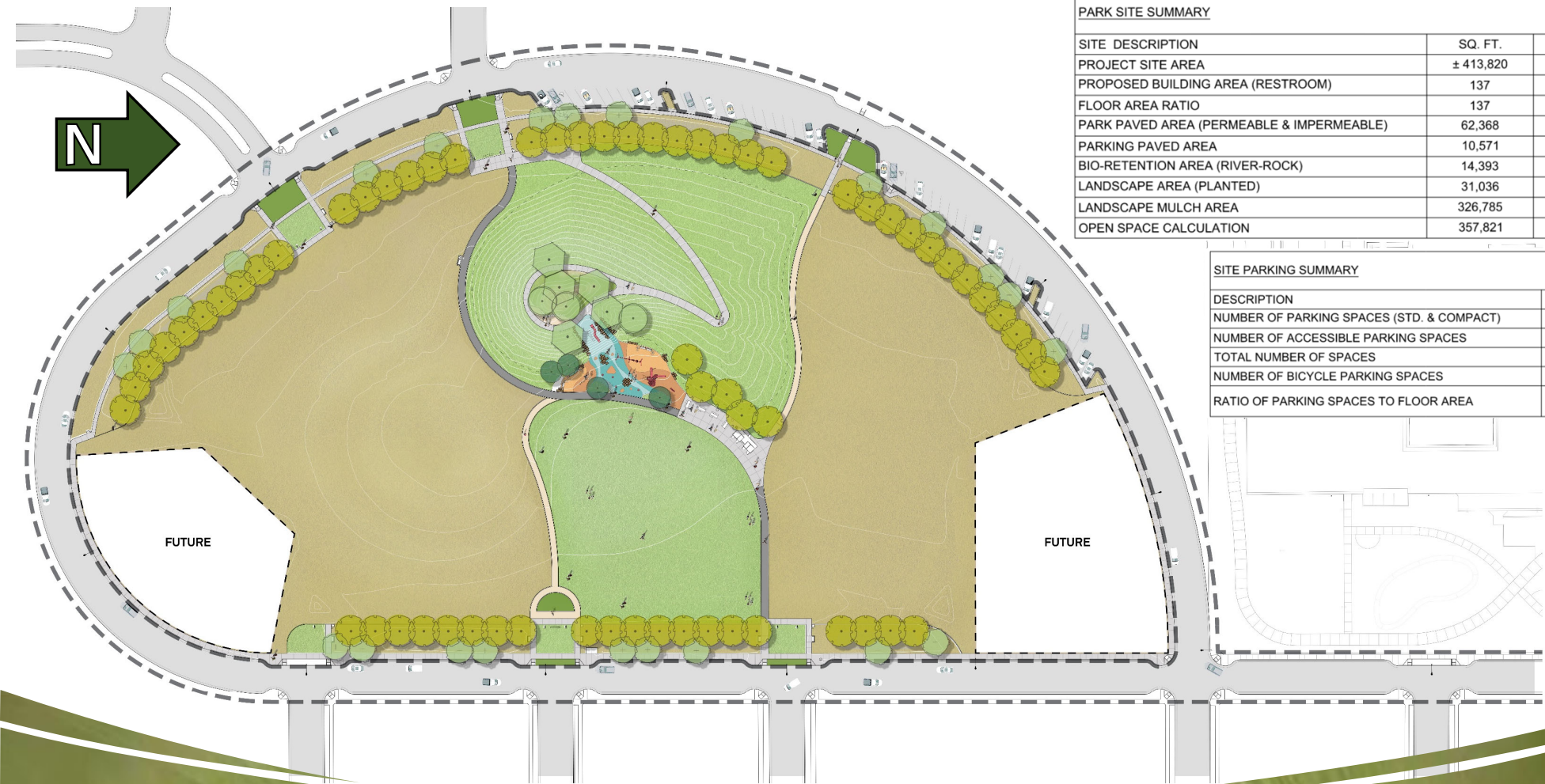
PARK CONSTRUCTION SCHEDULE

BID RESULTS

Three (3) bids received that came in below the engineer's estimate (including all bid alternants).

Avison Construction Inc. awarded as the lowest responsive responsible bidder (\$8,646,293)

PARK CONSTRUCTION BIDS



PARK SITE SUMMARY

SITE DESCRIPTION	SQ. FT.	ACREAGE
PROJECT SITE AREA	± 413,820	± 9.5 AC
PROPOSED BUILDING AREA (RESTROOM)	137	0.003 AC
FLOOR AREA RATIO	137	0.003 AC
PARK PAVED AREA (PERMEABLE & IMPERMEABLE)	62,368	1.43 AC
PARKING PAVED AREA	10,571	0.24 AC
BIO-RETENTION AREA (RIVER-ROCK)	14,393	0.33 AC
LANDSCAPE AREA (PLANTED)	31,036	0.71 AC
LANDSCAPE MULCH AREA	326,785	7.50 AC
OPEN SPACE CALCULATION	357,821	8.21 AC

SITE PARKING SUMMARY

DESCRIPTION	QTY
NUMBER OF PARKING SPACES (STD. & COMPACT)	50
NUMBER OF ACCESSIBLE PARKING SPACES	4
TOTAL NUMBER OF SPACES	54
NUMBER OF BICYCLE PARKING SPACES	12
RATIO OF PARKING SPACES TO FLOOR AREA	39 SPACES PER 100 SF

#13 Park at MLK Magnet Core