



# **Southwest Fresno Community Health Hub**

## **St. Rest + Food to Share Hub**

### **TCC Community Meeting**



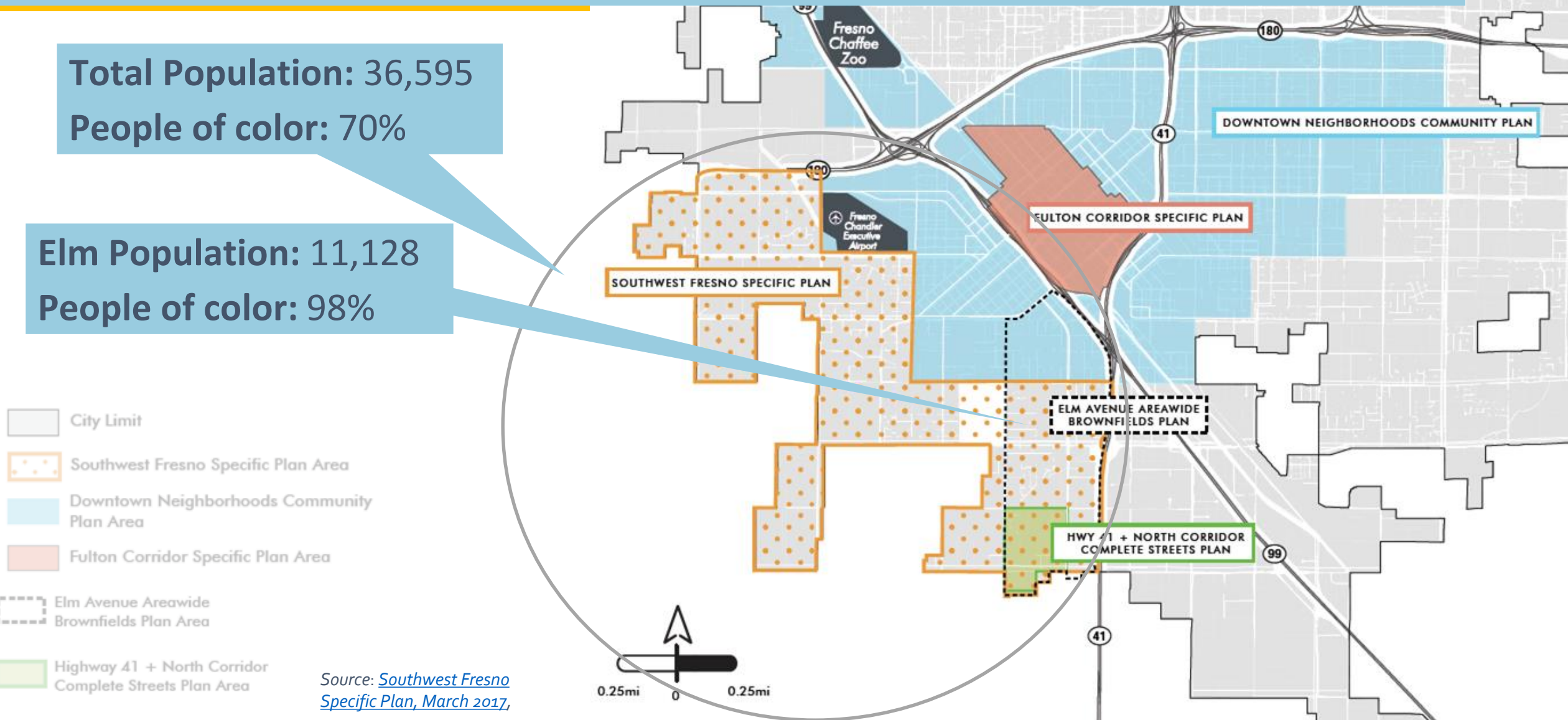
**June 9, 2021**



# Southwest Fresno & Elm Ave. Corridor Demographics

**Total Population: 36,595**  
**People of color: 70%**

**Elm Population: 11,128**  
**People of color: 98%**



# Southwest Fresno Health Inequities

	SW Fresno	City of Fresno	Fresno County	California
Adults Obesity Rate	31.8%	28.5%	29.1%	24.8%
Adults Not Insured	27.1%	22.3%	N/A	N/A
Children Living in Poverty (<18)	54.0%	38.1%	35.0%	20.9%
Adults Who Did Not Graduate from High School or Receive a GED	43.7%	24.7%	26.3%	18.7%
Adults who are Food Insecure	21%	N/A	14.7%	8.4%

Sources: [Southwest Fresno Specific Plan, May 2017](#), [Advancing Health Equity and Inclusive Growth in Fresno County](#), [PolicyLink Report](#)

\*Adults ages from 18 to 64

# Disparities In Southwest Fresno

Indicators	93706 SW Fresno	93702 SE Fresno
Life Expectancy	59.8 years	80.6 years
Avg. Household Income	\$19,760	\$48,318
Bachelor's Education or Higher	6.2%	40.2%

Sources: The California Healthy Places Index, CDPH

# SW Fresno Community Health Hub

## PROJECT AIM

Building a Community Health Hub along Elm Avenue will not only address inequities, high rates of obesity, diabetes, food insecurity, unemployment, people experiencing homelessness and lack of access to healthcare and public transportation, but also help implement a community revitalization strategy for the area crafted by engaged residents and adopted by the City of Fresno to create momentum for transformation in SW Fresno.

## PROJECT COMPONENTS

- **Rehabilitate a 6,800 sq. ft. warehouse to establish a Food Hub** to receive, sort, store, and redistribute millions of pounds of healthy food rescued by Food to Share (a Fresno Metro Ministry program)
- Buy and build on land adjoining the St. Rest campus **as a community hub and activity center** with a health clinic, community kitchen, co-op grocery store, community center, behavioral health services, workforce readiness and training, civic infrastructure and community development offices, child care, green spaces, community plaza, gardens, affordable housing, allied businesses, banking, adult and youth educations, arts and culture center and new jobs.
- Develop a **Fresno County Food Policy Council** to support equitable food systems

# FOOD INSECURITY IN SOUTH FRESNO

---

Fresno is ranked as the 3rd worst food hardship MSA in the U.S., despite Fresno being the central city in the most robust food producing region of the world.

---

Southwest Fresno Community, a predominant food desert area of Fresno in terms of the percentage of the population that is both low-income and lives over a 1/2 mile away from a grocery store.

---

The community has over 30,000 residents is historically a high concentrated poverty, high pollution burdened, disinvested and neglected part of the city of Fresno, 70% populated by people of color.

---

Southwest Fresno Community is also a place of amazing people with gifts, skills, knowledge, and passions, an asset-based place with a talent pool of resident leadership, ready now to organize with unifying themes, resources and relationships to finally change the trajectory of the whole community toward racially inclusive opportunities, healing, and broad-based regenerative health and prosperity.

---

\*Food Hardship: experiencing a time within the past 12 months when you did not have enough money to buy food that you or your family needed

# Fresno County Community Health Needs Assessment 2019 Priorities



Public transportation  
Economic opportunities  
Healthcare services  
Air pollution  
Parks and safe public spaces  
Access to healthy foods  
Community engagement  
Affordable quality housing



# FOOD SYSTEM EQUITY CENTERS HOLISTIC REVITALIZATION





# Existing Warehouse for Food to Share Hub

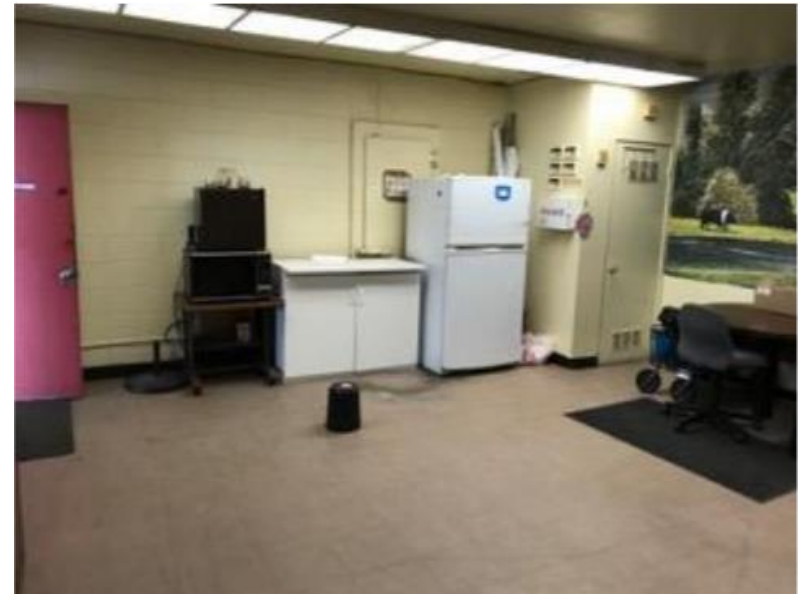
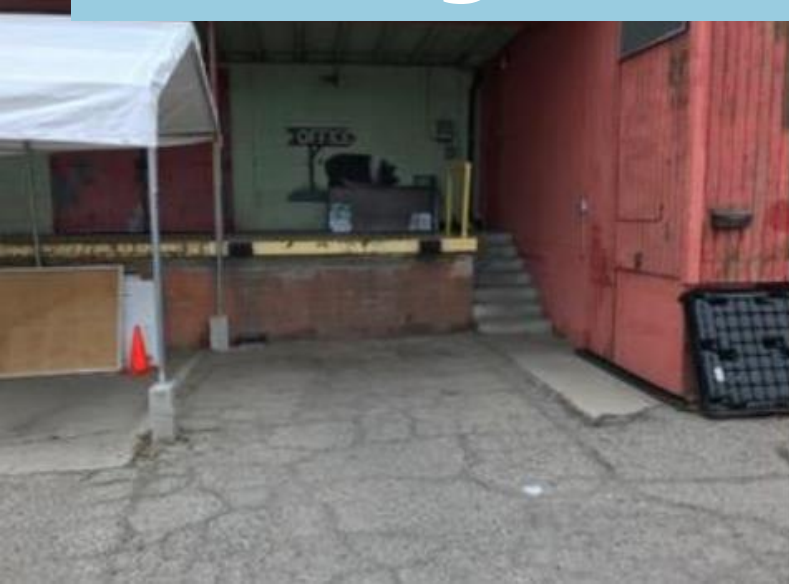




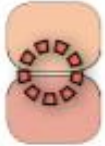
Figure 2-9

## ELM AVENUE CORRIDOR VISION

### VISION COMPONENTS



Streetscape improvements, identity graphics, murals, trees, high-quality bike facilities and bus service, and a strong connection to downtown



Stores and businesses, with concentrations around Elm/Jensen and Elm/North as well as all along the corridor



More street and pedestrian connections to surrounding neighborhoods



Places for youth and people of all ages to recreate, learn and thrive



Gateways



# Elm Ave. Corridor Vision



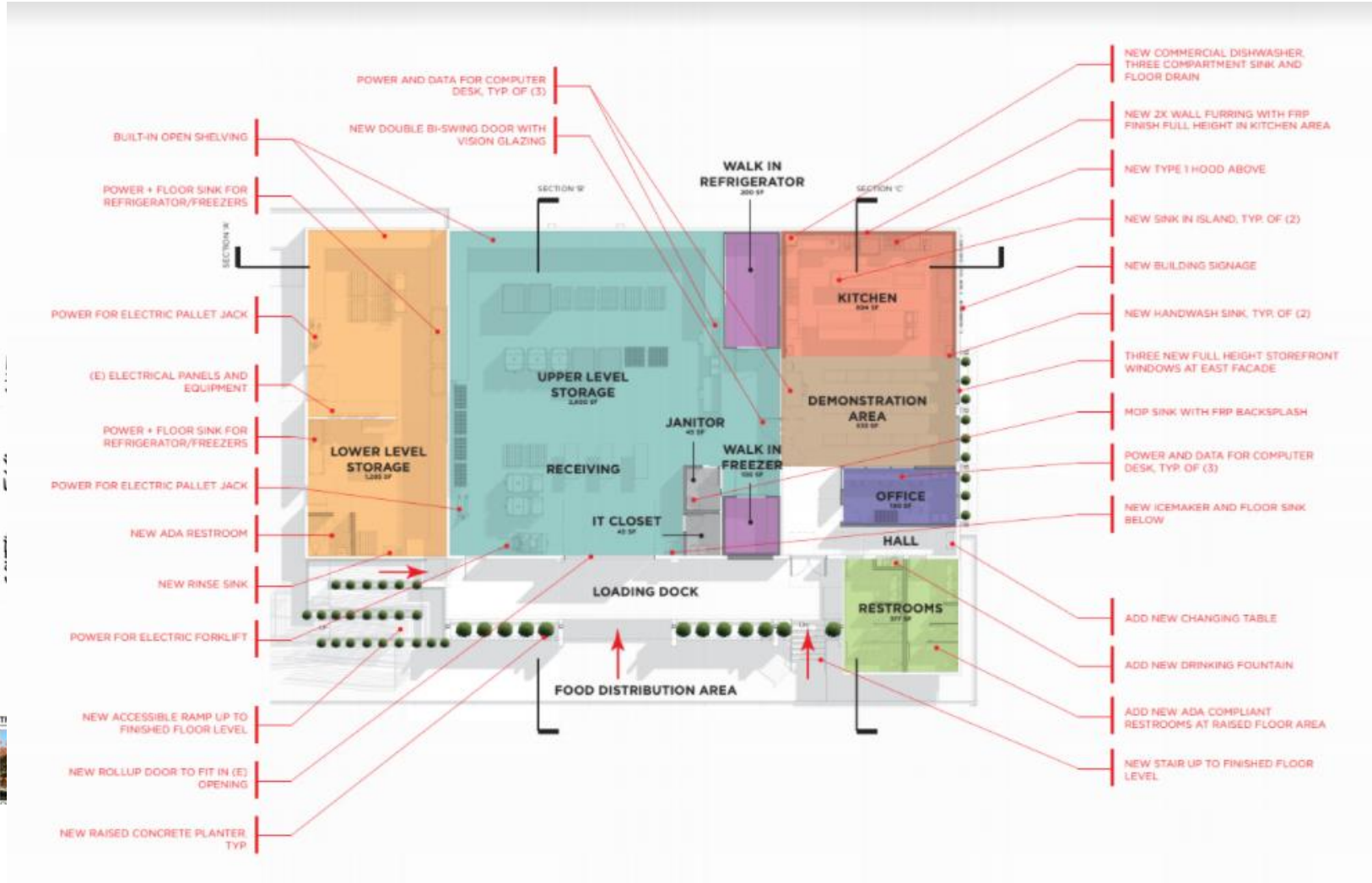
St. Rest Property. Catalyst Site shown in yellow boundary and Expanded Catalyst Site shown in green.

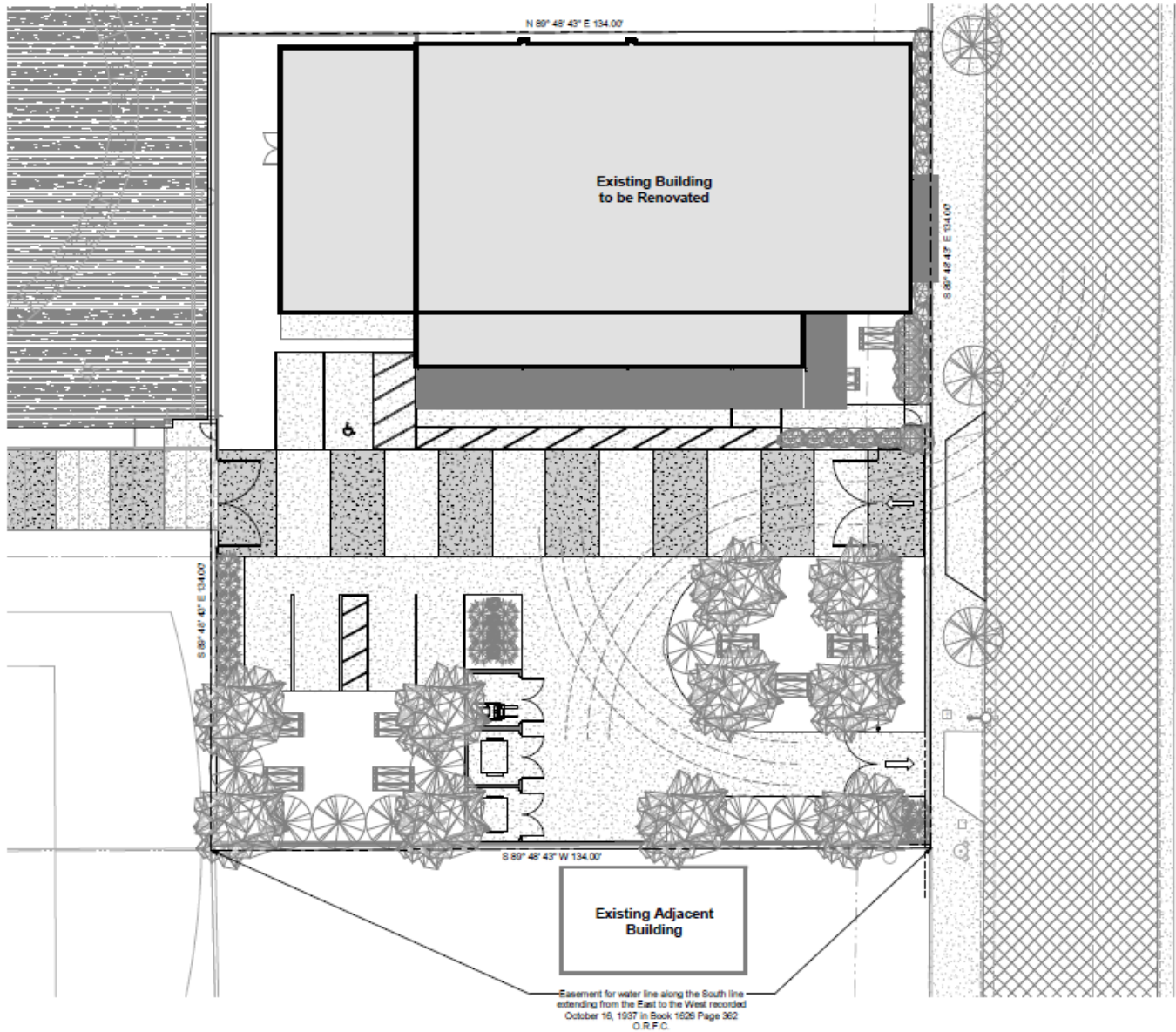


Illustrative view looking south on Elm Avenue from Rev. Chester Riggins. Mixed-use development on both sides of Elm Avenue would create a critical mass of activity and a strong sense of place.



# St. Rest + Food to Share Hub





① SITE PLAN - PROPOSED

## GENERAL NOTES

## KEYNOTES

## SITE LEGEND

PH

**PAUL HALAJIAN  
ARCHITECTS**  
385 Clovis Ave, Suite 100  
Clovis, CA 93612-1185  
T: 559.297.7900 F: 559.297.7950  
www.halajianarch.com

**NOT FOR  
CONSTRUCTION**

THIS DOCUMENT (DRAWING) represents the work of the architect and the property rights are reserved by the architect. No part of this document may be reproduced or transmitted in any form or by any means electronic or mechanical, including photocopying, recording, or by any information storage and retrieval system, without the prior written permission of the architect.

**PROJECT:**  
**Fresno Metro Ministries**  
**Saint Rest Food to Share Renovation**  
2316 South Elm Avenue, Fresno, CA, 93706

**SHEET: Site Plan - Proposed**

## DRAWING SET INFORMATION:

SH 13.001 Progress Set

## REVISIONS:

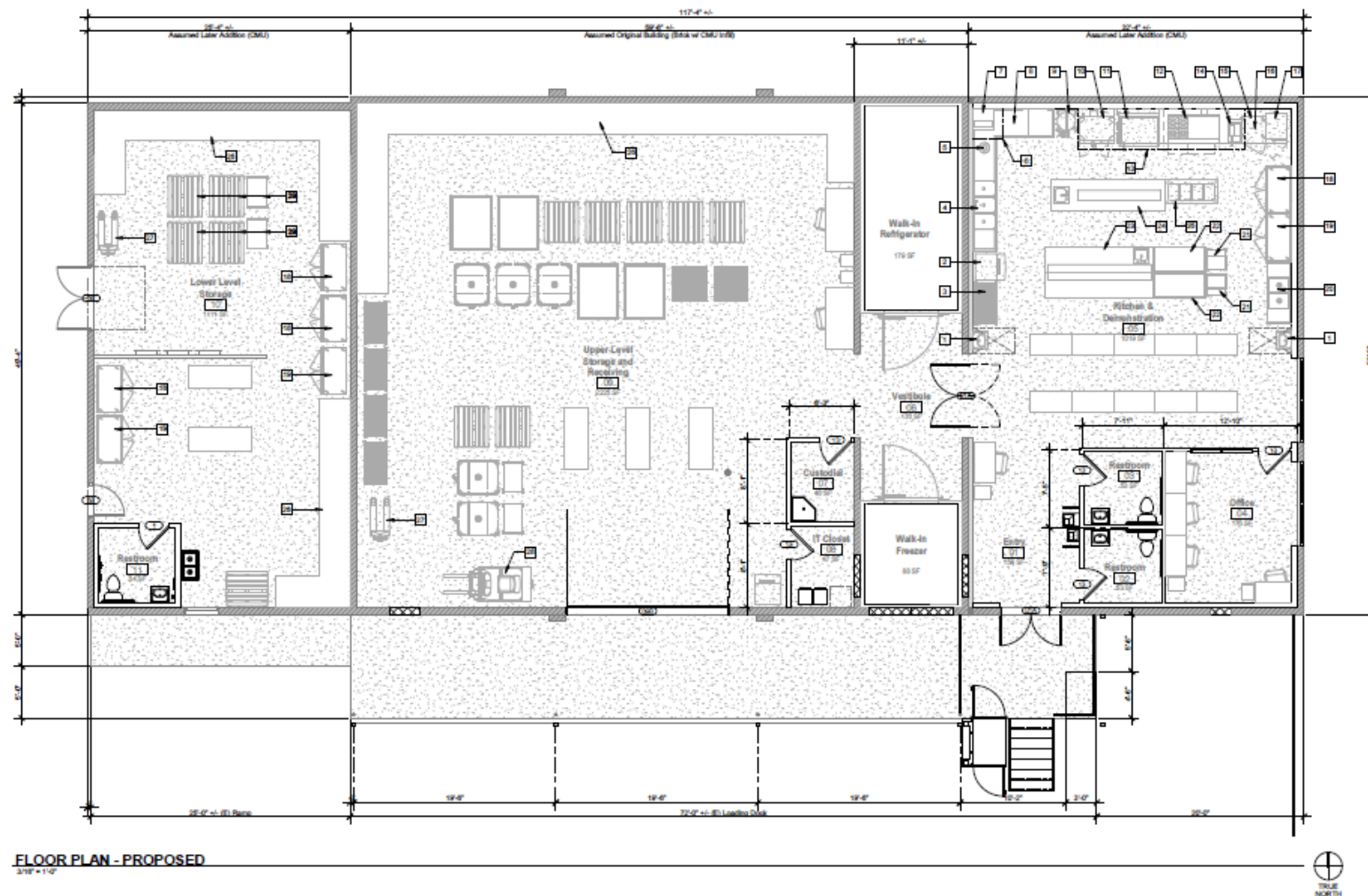

## PROJECT NUMBER:

2020-20

## SHEET NUMBER:

A102





**FLOOR PLAN - PROPOSED**

## GENERAL NOTES

## KEYNOTES

- |    |  |    |   |
|----|--|----|---|
| 1  | Wall mount hood with side splash (NE)                        | 16 | Fry, deep warmer (NE)   |
| 2  | Ice maker with storage bin (NE)                              | 17 | Hot food cabinet (NE)   |
| 3  | Adjustable wire shelving unit - 20"x48" (NE)                 | 18 | 2 door reach in refrigerator (NE)   |
| 4  | Integrated pot rack and wall dishwasher (NE)                 | 19 | 2 door reach-in freezer (NE)  |
| 5  | Commercial prep counter - 16' x 30" (NE)                     | 20 | 2 compartment prep sink - 30"x14" (NE)  |
| 6  | Commercial grade kitchen hood, Type I (NE)                   | 21 | Mobile pan rack (NE)  |
| 7  | Door type dishwasher (NE)                                    | 22 | Mobile stainless steel workstation on casters (NE)  |
| 8  | Covered dishcart - 30"x48" (NE)                              | 23 | Island stainless steel workstation with sink, overhead and pot rack - 30"x15" (NE)                |
| 9  | 20 x 20 x 100 inch table and 4 chairs (NE)                   | 24 | Island stainless steel workstation with sink, overhead and pot rack - 30"x12" (NE)                |
| 10 | Connection boxes (NE)  | 25 | Four seat hot food table (NE)   |
| 11 | Tilting sliding - 40 gal. (NE)                               | 26 | Industrial Rack Shelving  |
| 12 | Range base with open burners and 24" griddle - 60" (NE)      | 27 | Electric potter jack storage location (N1,C2) - use electrical design for power requirements      |
| 13 | Commercial grade kitchen hood, Type I - grease - 16' 0" (NE) | 28 | Electric food/utensil storage (N1,C2) - use electrical design for power requirements              |
| 14 | Power (NE)   | 29 | Stainless hoods include stainless furniture and equipment, choose for stainless furniture (N1,C2) |
| 15 | Woodsup Freezer (NE)   |    |   |

PH

PAUL HALAJIAN  
ARCHITECTS

389 Clovis Ave, Suite 100  
Clovis, CA 93612-1185  
T: 559.297.7900 F: 559.297.7950  
[www.halailanarch.com](http://www.halailanarch.com)

NOT FOR  
CONSTRUCTION

PAUL MALLARD ARCHITECTS expressly reserves its copyright and other property rights specifically relating to the contents of these plans. This document and the ideas and designs incorporated herein, as an integral part of professional services rendered by PAUL MALLARD ARCHITECTS, is not to be used or copied or in part for any other project without prior written authorization from PAUL MALLARD ARCHITECTS.

**PROJECT:**  
**Fresno Metro Ministries**  
**Saint Rest Food to Share Renovation**  
2316 South Elm Avenue, Fresno, CA, 93706

SHEET: Floor Plan - Proposed

PROJECT:

### DRAWING SET INFORMATION

04.12.2021	Programa Set
------------	--------------

**REVISIONS:**


PROJECT NUMBER

2020-20

SHEET NUMBER

A202

















Fresno is poised to advance equity, alleviate poverty, and improve health, by partnering to design a Community Health Hub in Southwest Fresno that is anchored by the St. Rest + Food to Share Hub and the completed St. Rest Church campus.

#### PLANT PALETTE

SIZE BOTANICAL NAME / COMMON NAME

##### TREES

- 15 GAL LAURUS NOBILIS / BAY LAUREL
- 15 GAL LAGERSTROEMIA INDICA / CRAPE MYRTLE
- 15 GAL PISTACIA CHINENSIS / CHINESE PISTACHE

##### SHRUBS

- 5 GAL OLEA EUROPAEA 'MONTANA' / LITTLE OLIVE
- 5 GAL ROSEMARINUS OFFICINALIS 'TUSCAN BLUE' / TUSCAN BLUE ROSEMARY
- 5 GAL TULBAGHIA VULGARIS / SOCIETY GARLIC

##### TREES



##### SHRUBS

