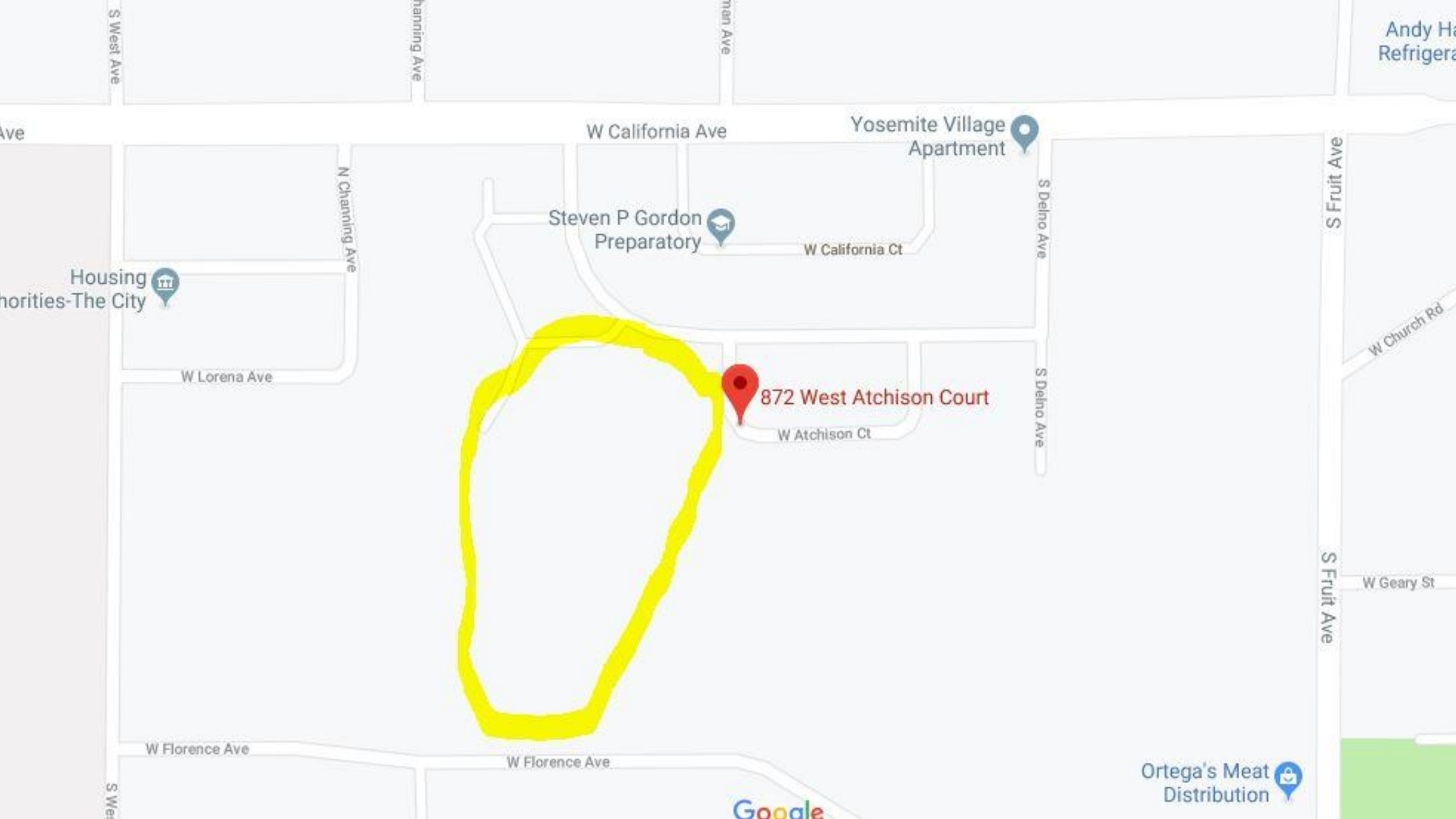


Project #15 - Yosemite Village Community Orchard Fresno Metro Ministry





Andy Ha
Refriger

Ave

W California Ave

Yosemite Village
Apartment

Steven P Gordon
Preparatory

W California Ct

Housing
Authorities-The City

W Lorena Ave

872 West Atchison Court

W Atchison Ct

S Fruit Ave

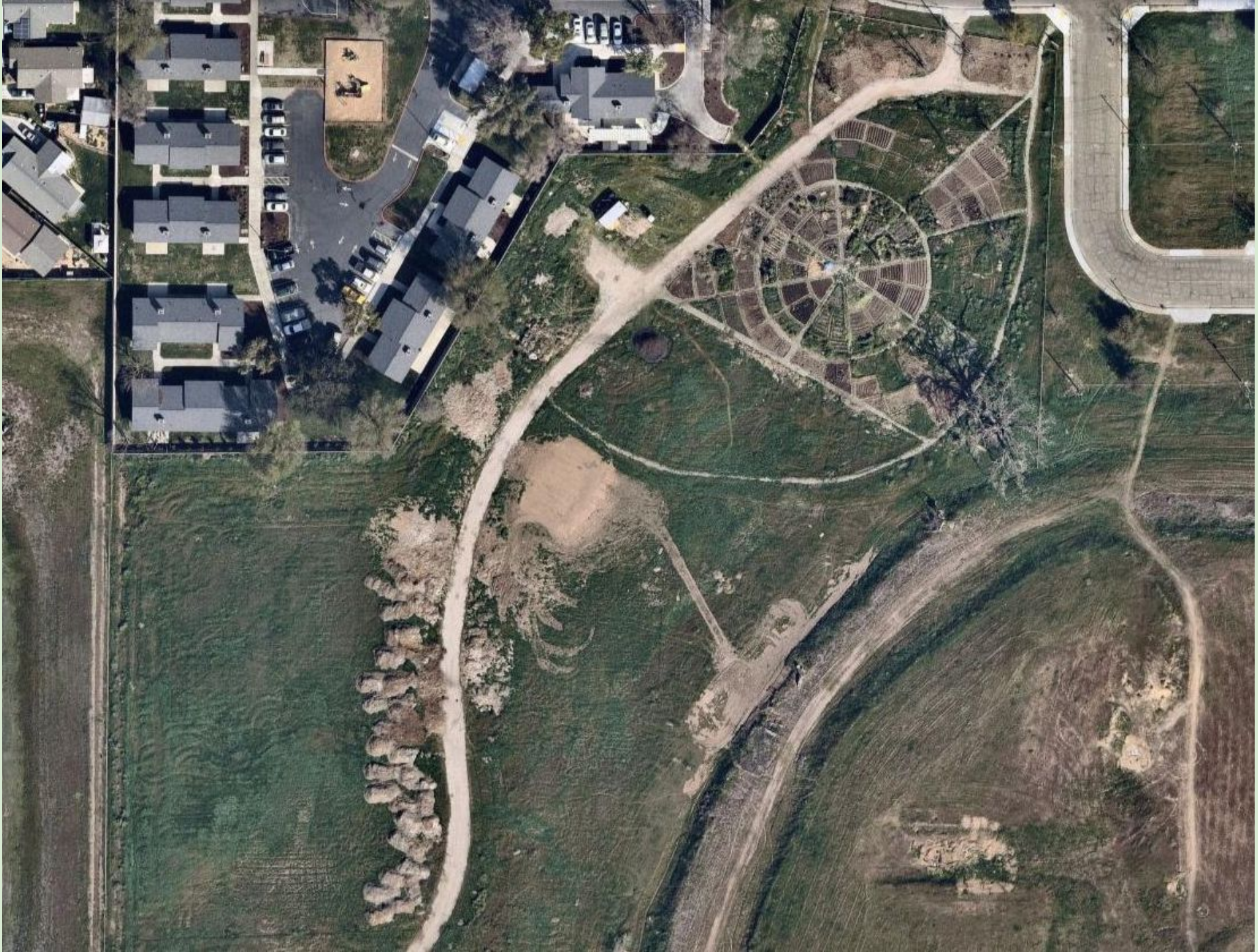
W Church Rd

S Fruit Ave

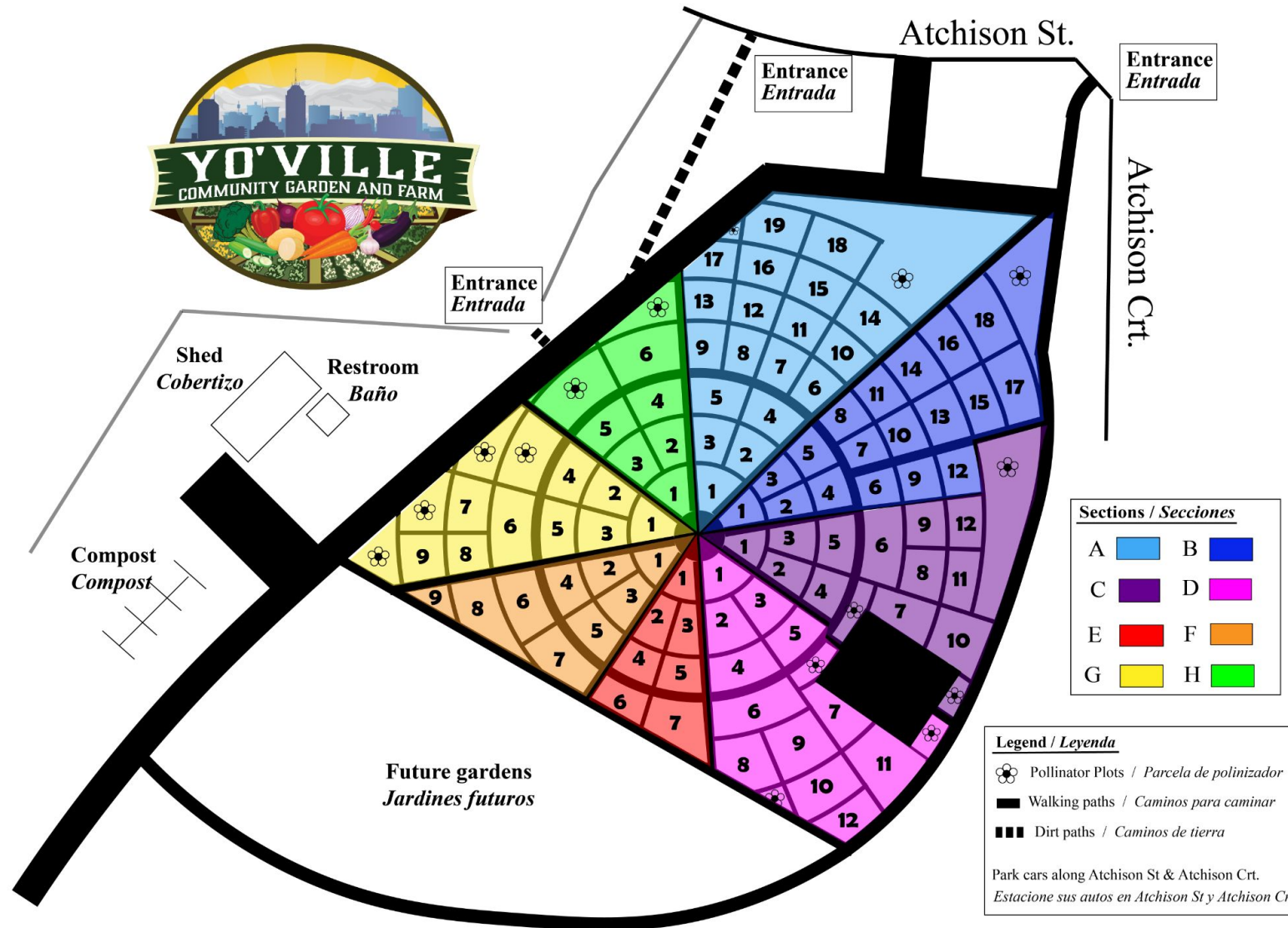
W Geary St

Ortega's Meat
Distribution

Google



Community Garden



Site Overview

92 Community Garden Plots

35 active gardeners

Availability:

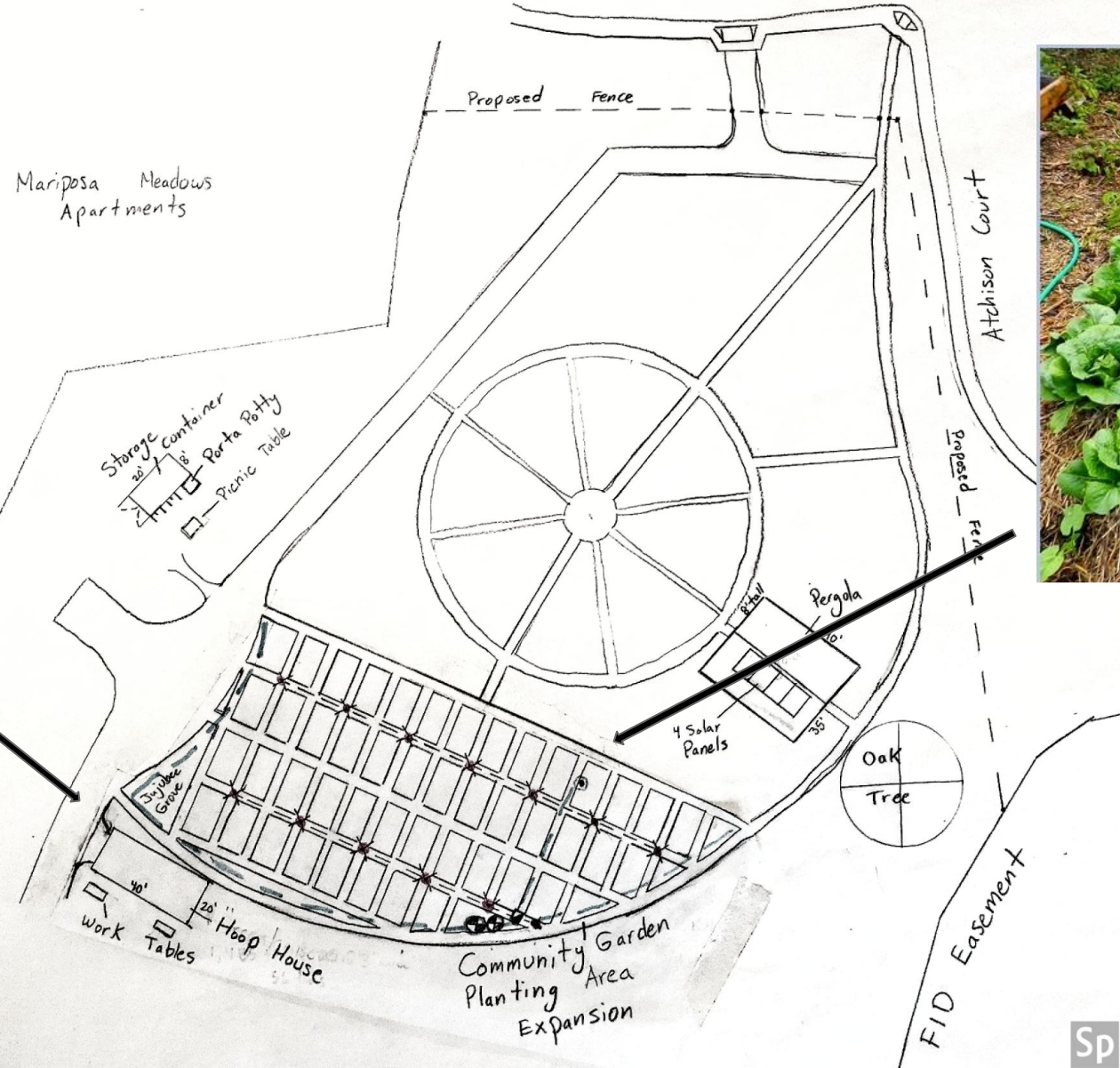
~10 plots still open

Cost: \$18 for 6 months or
\$35 a year

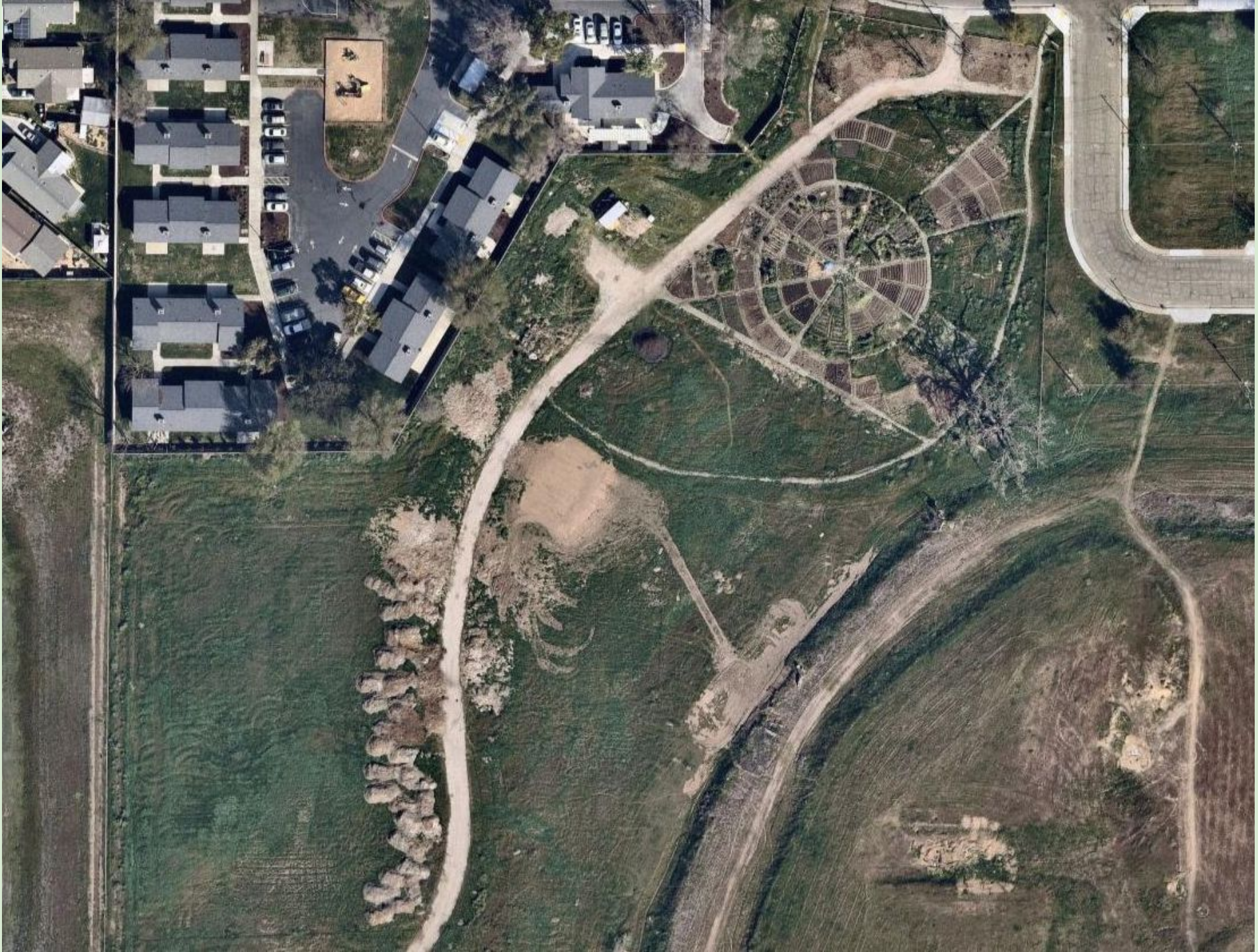
Expand Garden Plots



**Supplies to grow plant starts for
Hugelkultur Planting Areas**



**48 New
Hugelkultur Planting Areas**



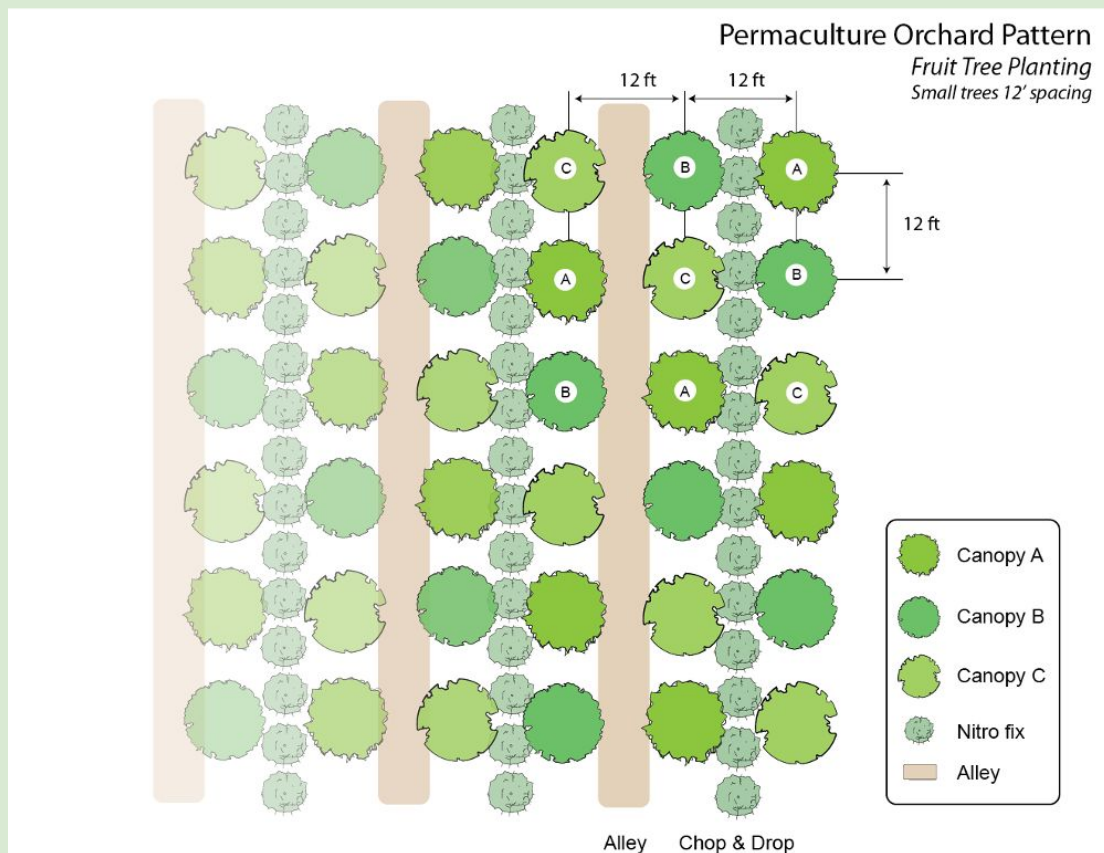
Hoop house



Orchard Design

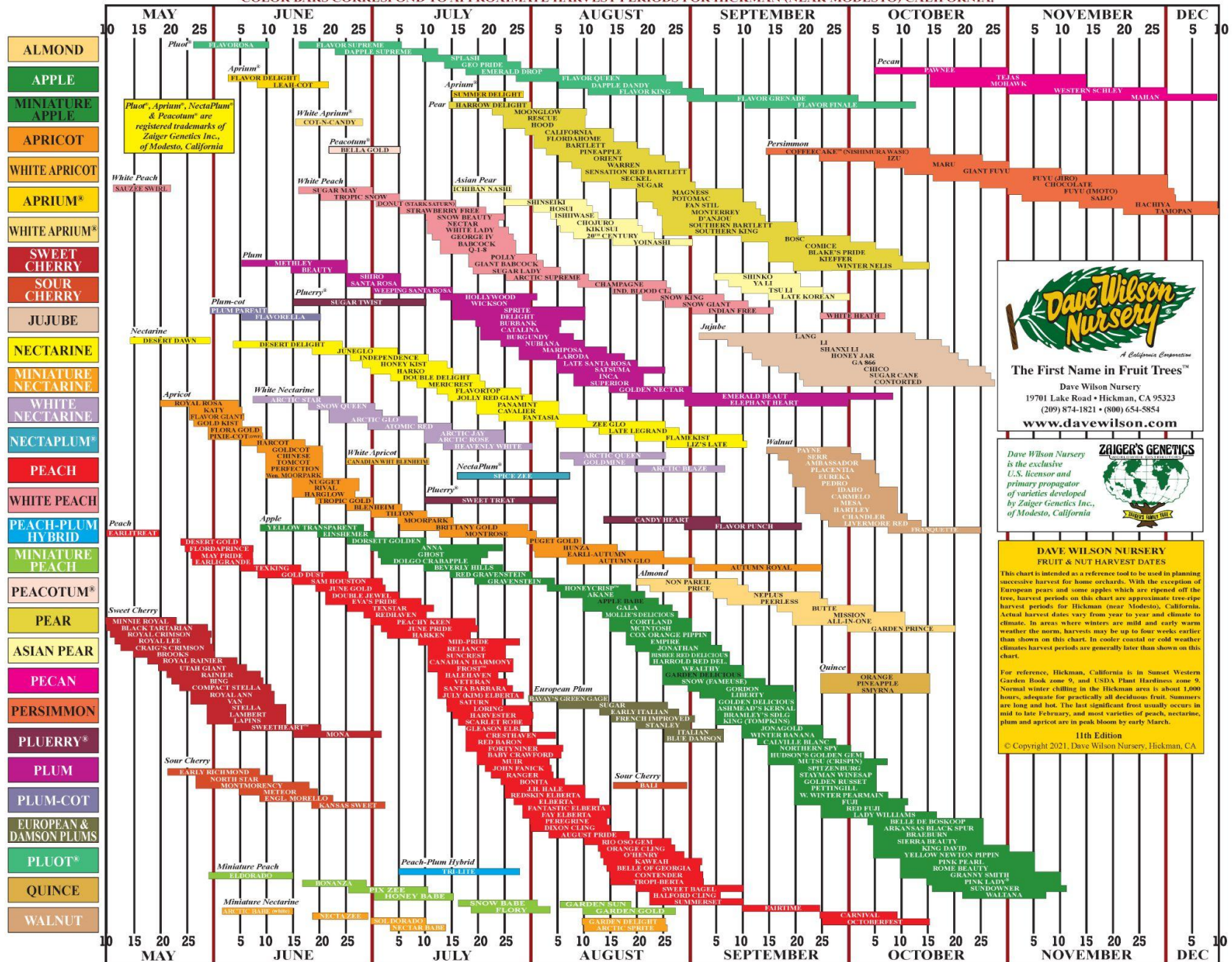


Community Orchard



FRUIT & NUT HARVEST DATES

COLOR BARS CORRESPOND TO APPROXIMATE HARVEST PERIODS FOR HICKMAN (NEAR MODESTO) CALIFORNIA.





Farm Plot

Walking
Orchard

Steps to Begin:

Community Orchard:

1. Finalize Tree and Native Plant Species List
2. Finalize Bioswale and Orchard Design
3. Consultation with Regional Urban Forester.

By August
2021

By September
2021

2022-23

Pergola:

1. Obtain building permit to add a pergola with 4 solar panels
2. Finalize pergola design

Hugelkultur Garden Beds:

1. Finalize hugelkultur garden beds design
2. Calculate an estimate of woody biomass to be used

Volunteer Days



Winter Work Hours:

Tuesday/Thursday from 2-5pm

Summer Volunteer Hours:

Starting March 16th

Tuesday/Thursday from 7-10am

Help us with developing and maintaining the site!

- Weeding/Mulching
- Installing a hoop house and many more projects!

Email Amber@fresnetmin.org or call 559-485-1416 to sign up