



#3 GRID Solar Collaborative Single Family Partnership

People. Planet.
Employment.





PROGRESS TO-DATE....

- **Door-to-door Canvassing – 185 homes**
- **Community Partners - Stone Soup Fresno and The Fresno Center**
- **CBOs Contacted - 14**
- **Single Family Pipeline – 12 houses**



#4 GRID Solar Collaborative Multi-family Partnership

People. Planet. Employment.





☐ **5 Fresno Housing Authority multi-family sites**

☐ **The planned Multi-family Projects are,**

- **Bridges at Florence**
- **Renaissance at Trinity**
- **Sequoia Court Terrace**
- **Renaissance at Santa Clara and**
- **Legacy Commons**



Bridges at Florence



Renaissance at Trinity



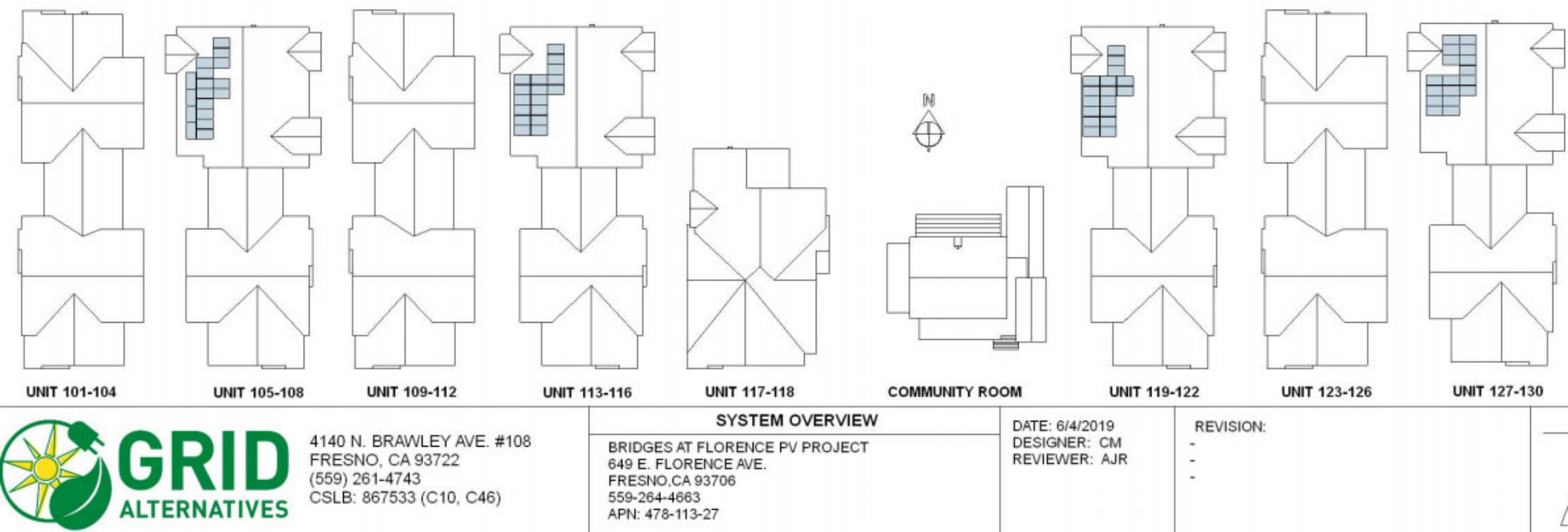
Legacy Commons



Sequoia Court Terrace



Renaissance at Santa Clara



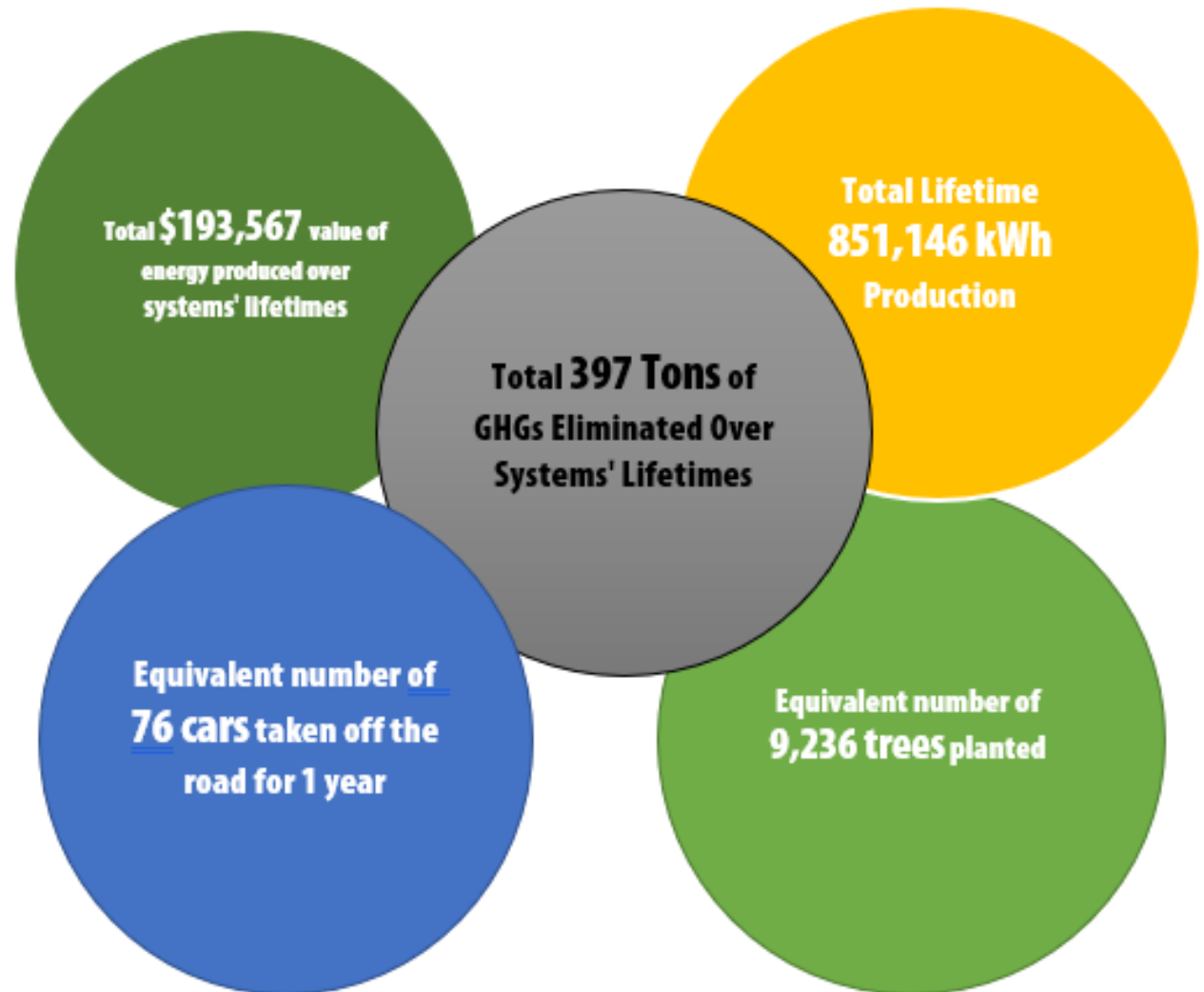
Bridges at Florence: Design



Impacts:

**20.74 kW-DC
Bridges at
Florence**

Bridges at Florence Projects impacts are (Total 20.74 kW-DC system);



Workforce Development

- ☐ **Total Trainees Targeted**
- 200
- ☐ **Training workshops**
- Every 5 weeks
- ☐ **Training duration**
- One Week
- ☐ **Earn industry recognized certificates**
- OSHA 10 and CPR
- ☐ **YTD Trainee participated**
- Five





Making a difference.....

Are you interested in Single-family Solar system? Please contact, Alice Gonzalez, 559-261-4743



Interested in Qualifying for a TCC Funded Solar System?

CONTACT:

Alice Gonzalez

559-261-4743

Interested in Training?

CONTACT:

Nancy Andersen

559-558-5933



People. Planet. Employment.

Questions